

Service Manual Trucks

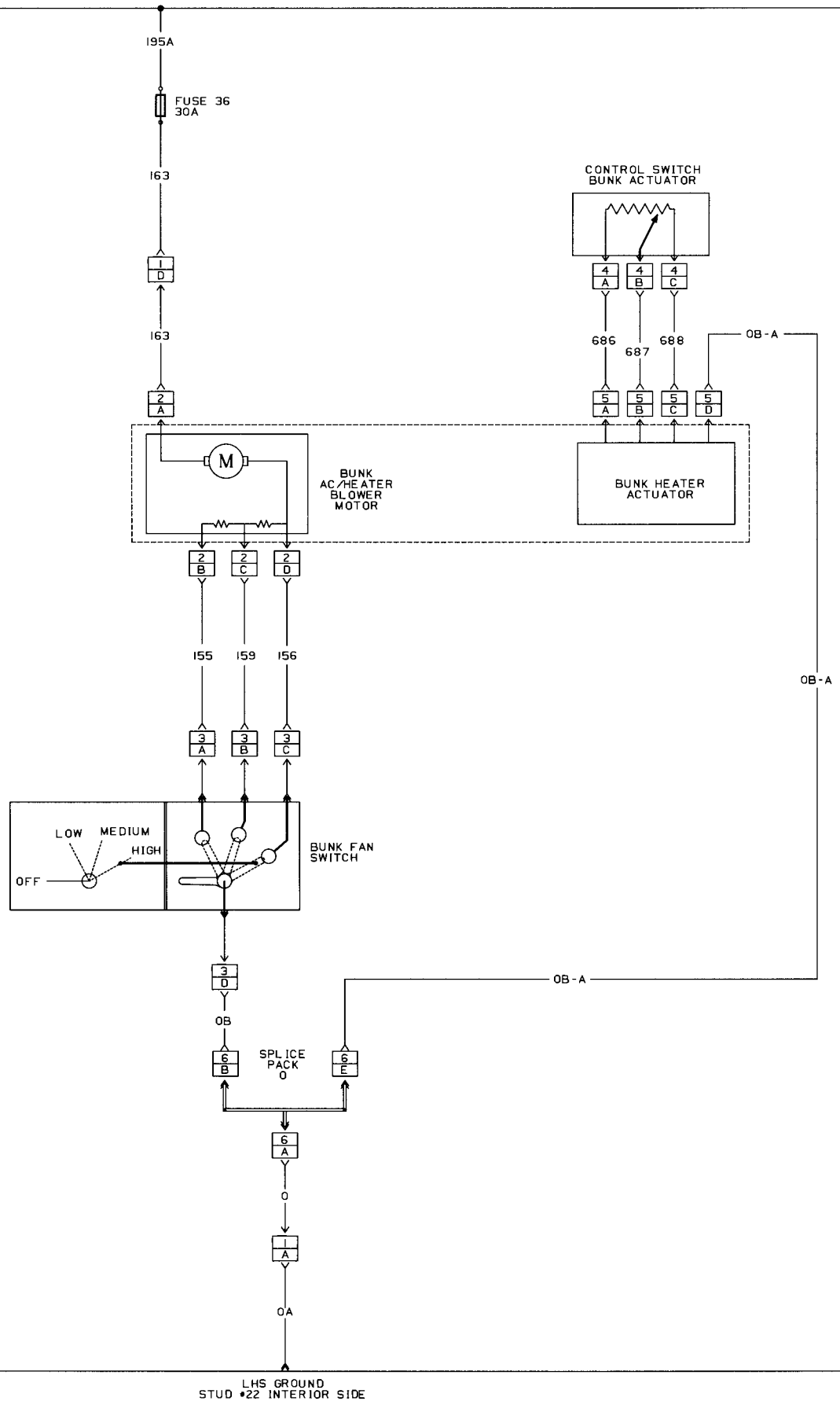
Group **37**

Electrical Schematic:
Bunk A/C Fan,
Automatic Temperature Control

VNL Sleeper

From Build Date 7.98



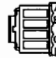

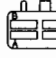
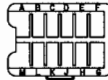
BATTERY 12 VOLT
 IGNITION 12 VOLT
 ACCESSORY 12 VOLT

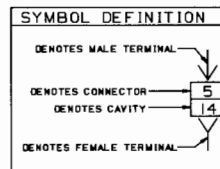
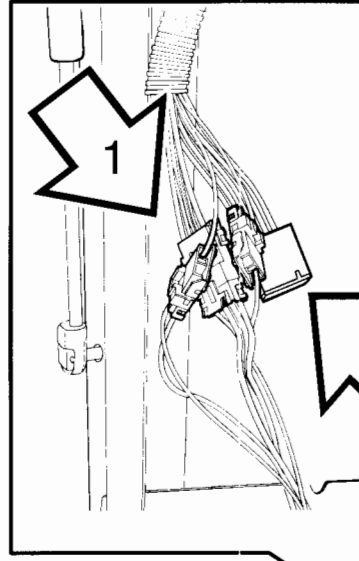


Bunk A/C Fan, Automatic Temperature Control - VN Sleeper

EFFECTIVE DATE	DESCRIPTION

CONNECTOR AND SPLICE INFORMATION
CONNECTORS VIEWED FROM CABLE ENTRY

	CONNECTOR 1 CAB HARNESS TO BUNK HARNESS																			
	<table border="1"> <thead> <tr><th colspan="3">TABLE OF CONTENTS</th></tr> <tr><th>CAVITY</th><th>CIRCUIT</th><th>FUNCTION</th></tr> </thead> <tbody> <tr><td>A</td><td>0A</td><td>GROUND</td></tr> <tr><td>D</td><td>163</td><td>12 VOLT SUPPLY</td></tr> </tbody> </table>			TABLE OF CONTENTS			CAVITY	CIRCUIT	FUNCTION	A	0A	GROUND	D	163	12 VOLT SUPPLY					
TABLE OF CONTENTS																				
CAVITY	CIRCUIT	FUNCTION																		
A	0A	GROUND																		
D	163	12 VOLT SUPPLY																		
	CONNECTOR 2 BUNK HARNESS TO BUNK FAN MOTOR																			
	<table border="1"> <thead> <tr><th colspan="3">TABLE OF CONTENTS</th></tr> <tr><th>CAVITY</th><th>CIRCUIT</th><th>FUNCTION</th></tr> </thead> <tbody> <tr><td>A</td><td>163</td><td>12 VOLT SUPPLY</td></tr> <tr><td>B</td><td>155</td><td>LOW FAN SPEED</td></tr> <tr><td>C</td><td>159</td><td>MED FAN SPEED</td></tr> <tr><td>D</td><td>156</td><td>HIGH FAN SPEED</td></tr> </tbody> </table>			TABLE OF CONTENTS			CAVITY	CIRCUIT	FUNCTION	A	163	12 VOLT SUPPLY	B	155	LOW FAN SPEED	C	159	MED FAN SPEED	D	156
TABLE OF CONTENTS																				
CAVITY	CIRCUIT	FUNCTION																		
A	163	12 VOLT SUPPLY																		
B	155	LOW FAN SPEED																		
C	159	MED FAN SPEED																		
D	156	HIGH FAN SPEED																		
	CONNECTOR 3 BUNK HARNESS TO BUNK FAN SWITCH																			
	<table border="1"> <thead> <tr><th colspan="3">TABLE OF CONTENTS</th></tr> <tr><th>CAVITY</th><th>CIRCUIT</th><th>FUNCTION</th></tr> </thead> <tbody> <tr><td>A</td><td>155</td><td>LOW SPEED FAN</td></tr> <tr><td>B</td><td>159</td><td>MED FAN SPEED</td></tr> <tr><td>C</td><td>156</td><td>HI SPEED FAN</td></tr> <tr><td>D</td><td>0B</td><td>GROUND</td></tr> </tbody> </table>			TABLE OF CONTENTS			CAVITY	CIRCUIT	FUNCTION	A	155	LOW SPEED FAN	B	159	MED FAN SPEED	C	156	HI SPEED FAN	D	0B
TABLE OF CONTENTS																				
CAVITY	CIRCUIT	FUNCTION																		
A	155	LOW SPEED FAN																		
B	159	MED FAN SPEED																		
C	156	HI SPEED FAN																		
D	0B	GROUND																		
	CONNECTOR 4 BUNK ACTUATOR CONTROL SWITCH																			
	<table border="1"> <thead> <tr><th colspan="3">TABLE OF CONTENTS</th></tr> <tr><th>CAVITY</th><th>CIRCUIT</th><th>FUNCTION</th></tr> </thead> <tbody> <tr><td>A</td><td>686</td><td>CONTROL SWITCH SUPPLY</td></tr> <tr><td>B</td><td>687</td><td>CONTROL SWITCH SIGNAL</td></tr> <tr><td>C</td><td>688</td><td>CONTROL SWITCH RETURN</td></tr> </tbody> </table>			TABLE OF CONTENTS			CAVITY	CIRCUIT	FUNCTION	A	686	CONTROL SWITCH SUPPLY	B	687	CONTROL SWITCH SIGNAL	C	688	CONTROL SWITCH RETURN		
TABLE OF CONTENTS																				
CAVITY	CIRCUIT	FUNCTION																		
A	686	CONTROL SWITCH SUPPLY																		
B	687	CONTROL SWITCH SIGNAL																		
C	688	CONTROL SWITCH RETURN																		
	CONNECTOR 5 BUNK HEATER ACTUATOR																			
	<table border="1"> <thead> <tr><th colspan="3">TABLE OF CONTENTS</th></tr> <tr><th>CAVITY</th><th>CIRCUIT</th><th>FUNCTION</th></tr> </thead> <tbody> <tr><td>A</td><td>686</td><td>CONTROL SWITCH SUPPLY</td></tr> <tr><td>B</td><td>687</td><td>CONTROL SWITCH SIGNAL</td></tr> <tr><td>C</td><td>688</td><td>CONTROL SWITCH RETURN</td></tr> <tr><td>D</td><td>0B-A</td><td>GROUND</td></tr> </tbody> </table>			TABLE OF CONTENTS			CAVITY	CIRCUIT	FUNCTION	A	686	CONTROL SWITCH SUPPLY	B	687	CONTROL SWITCH SIGNAL	C	688	CONTROL SWITCH RETURN	D	0B-A
TABLE OF CONTENTS																				
CAVITY	CIRCUIT	FUNCTION																		
A	686	CONTROL SWITCH SUPPLY																		
B	687	CONTROL SWITCH SIGNAL																		
C	688	CONTROL SWITCH RETURN																		
D	0B-A	GROUND																		
	CONNECTOR 6 SPLICE PACK 0																			
	<table border="1"> <thead> <tr><th colspan="3">TABLE OF CONTENTS</th></tr> <tr><th>CAVITY</th><th>CIRCUIT</th><th>FUNCTION</th></tr> </thead> <tbody> <tr><td>A</td><td>0</td><td>GROUND</td></tr> <tr><td>B</td><td>0B</td><td>GROUND</td></tr> <tr><td>E</td><td>0B-A</td><td>GROUND</td></tr> </tbody> </table>			TABLE OF CONTENTS			CAVITY	CIRCUIT	FUNCTION	A	0	GROUND	B	0B	GROUND	E	0B-A	GROUND		
TABLE OF CONTENTS																				
CAVITY	CIRCUIT	FUNCTION																		
A	0	GROUND																		
B	0B	GROUND																		
E	0B-A	GROUND																		



CHANGE HISTORY

DESCRIPTION

