

# Service Manual Trucks

Group **37**

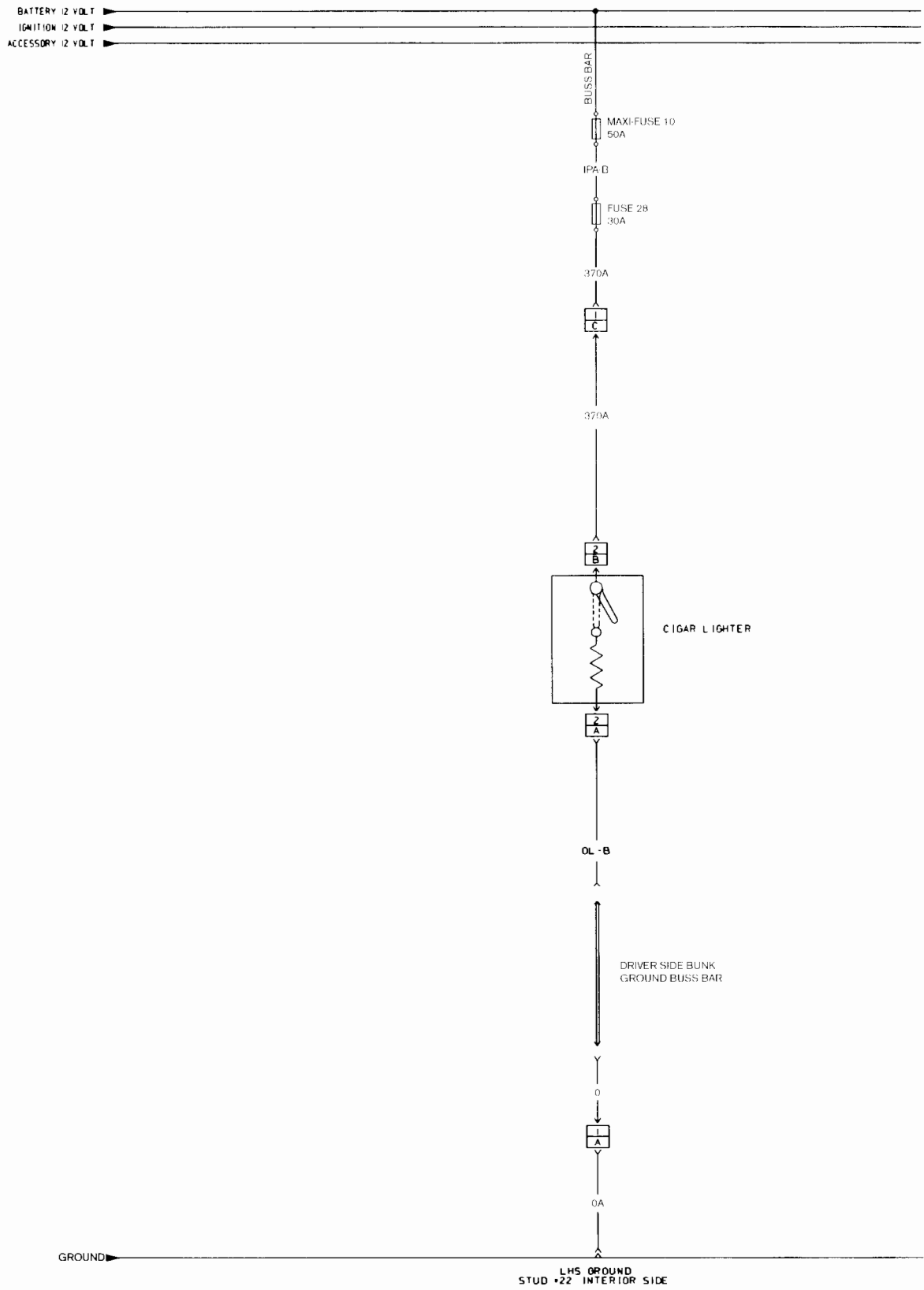
Electrical Schematic:

Bunk Cigar Lighter/  
Power Supply Socket

VN 420 Sleeper

From Build Date 2.98





Bunk Cigar Lighter/Power Supply Socket - VN 420 Sleeper

CONNECTOR AND SPLICE INFORMATION  
CONNECTORS VIEWED FROM CABLE ENTRY

CONNECTOR 1  
CAB HARNESS TO BUNK HARNESS



| TABLE OF CONTENTS |         |                |
|-------------------|---------|----------------|
| CAVITY            | CIRCUIT | FUNCTION       |
| A                 | 0A      | GROUND         |
| C                 | 370A    | 12 VOLT SUPPLY |

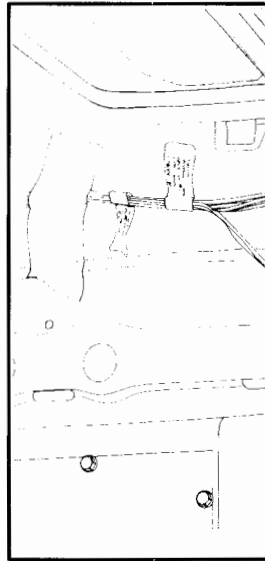
CONNECTOR 2  
CIGAR LIGHTER



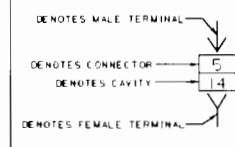
| TABLE OF CONTENTS |         |                |
|-------------------|---------|----------------|
| CAVITY            | CIRCUIT | FUNCTION       |
| A                 | 0L-B    | GROUND         |
| B                 | 370A    | 12 VOLT SUPPLY |

CHANGE HISTOR

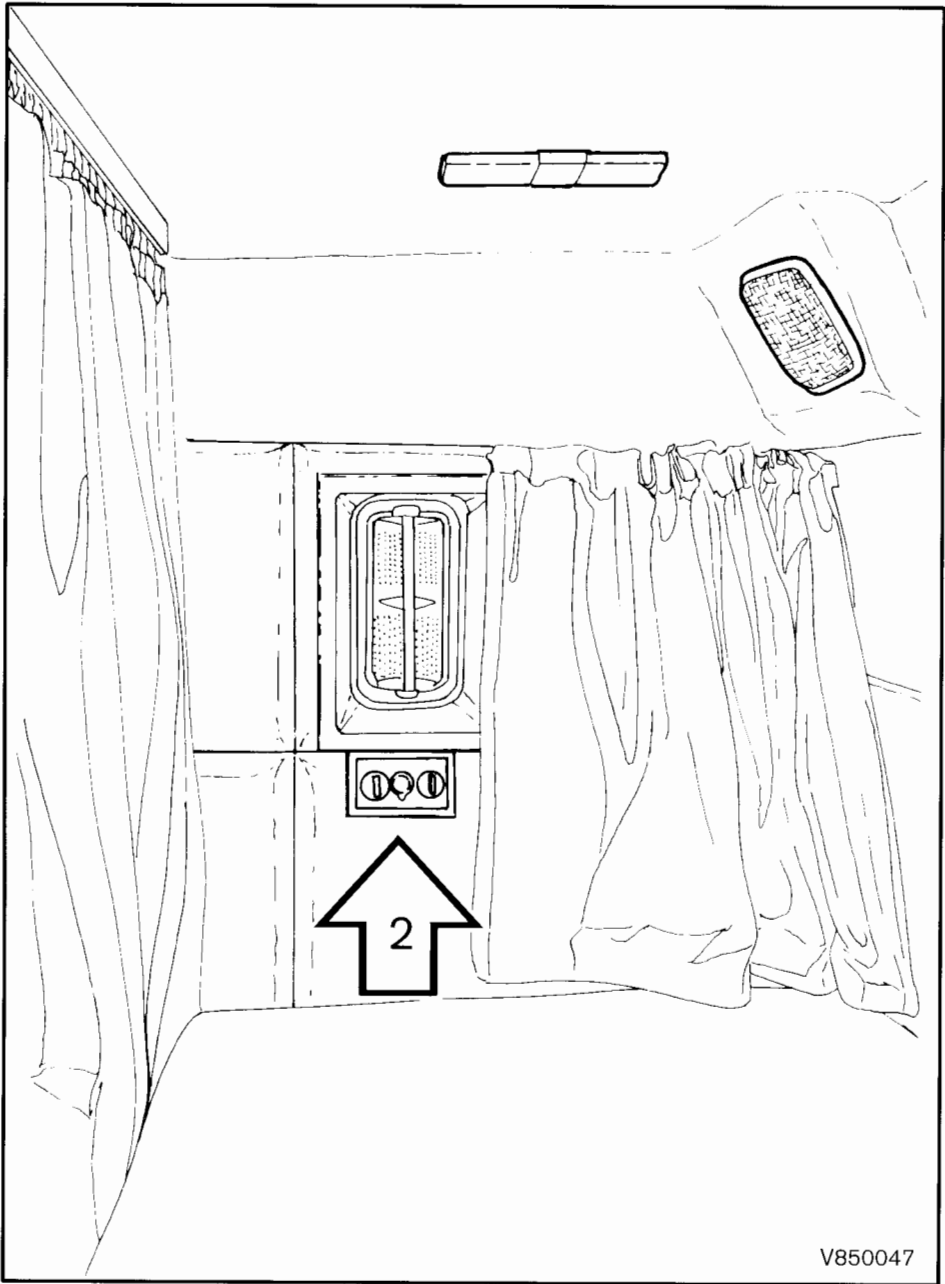
| EFFECTIVE DATE | DESCRIPTION |
|----------------|-------------|
|                |             |
|                |             |
|                |             |
|                |             |
|                |             |
|                |             |
|                |             |
|                |             |
|                |             |
|                |             |



SYMBOL DEFINITION







V850047